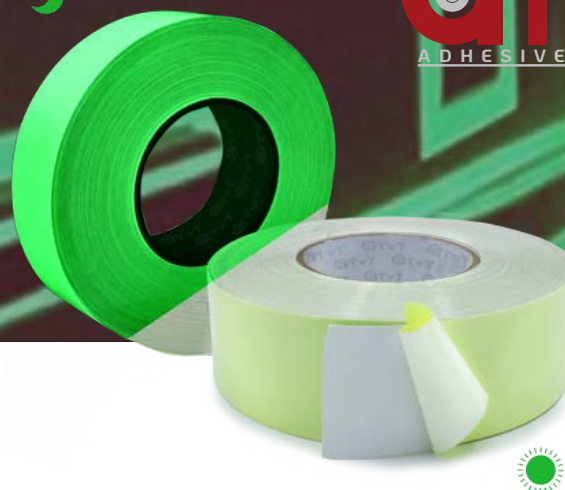


PHOTOLUMINESCENT TAPE (360 µm)

KEY FEATURES

- The photoluminescent film is designed to absorb energy from any nearby ambient light, such as fluorescent lamps or sunlight.
- Highly conformable, as well as having excellent resistance to external agents.
- **Requires only 30 minutes of light exposure**, either naturally or by artificial illumination (light bulbs), **to provide a prolonged glow of up to 4 hours of duration**.
- There is no limit regarding the number of times the transmittance of this product can be recharged.
- Product with excellent dimensional stability which can be die-cut to any shape desired by the customer.



Photoluminescent tape consisting of a glossy PVC photoluminescent film, coated with a solvent acrylic adhesive and protected by a liner composed by siliconized paper.

The tapes becomes an excellent solution, being durable UV and weather resistant product with perfect performance in indoor and outdoor uses. The product has the particularity to charge its photoluminescence level from the incident sunlight received from 10 to 30 minutes, being able to glow in the dark for more than 4 hours.

Available colors: 

Available liner color: 

PRODUCT COMPOSITION



CARRIER

Photoluminescent shiny PVC

ADHESIVE TYPE

Solvent acrylic

LINER

Siliconized paper

TECHNICAL CHARACTERISTICS

ADHESIVE PROPERTIES	VALUES			METHOD
Total Thickness	65 µm			ASTM D-3652
Tensile strength	≥ 8 N/cm			ASTM D-3759
Elongation at break	≥ 180 %			ASTM D-3759
Adhesion to steel	4 N/cm			ASTM D-3330
Shear resistance	≥ 48 h			ASTM D-3654
Rolling Tack Ball	≤ 12 cm			ASTM D-3121
Reflectance level (mcd/in)	3133 (0 min)	126,5 (5 min)	59,02 (10 min)	DIN 67510 - Part 1
Application temperature range	[+10°C - +35°C]			INTERNAL

The given values are typical values obtained in specific conditions of temperature, loads and adhesive surface determined by norm. The user must determine if the tape is suitable for their specific application by testing the product. In case help is needed, ATyT will provide you with professional customer support and recommendation, indicating which tape suits best your needs.



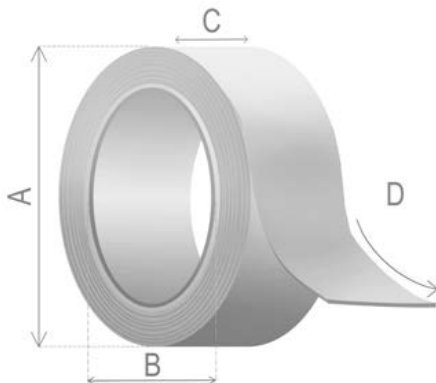
APPLICATIONS

- Used for marking panels, light switches and other dark areas in theatres and backstage.
- Applied on staircases, door frames, corridors, hallways, stairs, skirting boards, etc.
- **Used to mark emergency exits and danger zones in dark areas.**
- Developed for the identification and marking of temporary construction signs, device identification stickers, etc.
- Can be die-cut to any custom sizes and shapes.



Surfaces to which tape is applied should be clean, dry and free of grease, oil, moisture, dirt and other contaminants. Sufficient pressure should be applied during application. If not, it will affect the properties and appearance of the product.

STANDARD PRESENTATION:



Outer diameter (A)	168 mm			
Core diameter (B)	76 mm			
Width (C)	15 mm	25 mm	38 mm	50 mm
Length (D)	45,7 m			

Any other length and width available on request. Check conditions.
The product can be supplied with a multitude of different types of presentation (see conditions). Among others, we highlight: the personalization of the core, the customized plastic packaging, the shrink wrapping and the labeling of the tape.



STORAGE CONDITIONS

For better conservation of properties, product should be stored in its original packaging, between 20 and 30° C, preserved from direct exposure to sun and moisture. It is recommended to use the product within 12 months, since dispatching date.



GENERAL WARRANTY CONDITIONS

ATyT recommends applying the product only on clean, dry and free of grease, oil or other contaminants surfaces.

Product properties are typical and should not be considered specifications. They are based on tests believed to be reliable and performed conformance with recommended test methods. Values are expected to be used for comparison purposes only; they do not represent a manufacturer guarantee. Before using, the client should determine whether the product is fit for a particular purpose and for the user's method of application.

